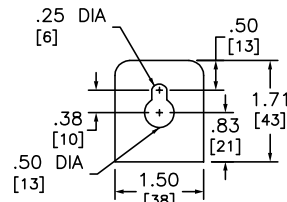
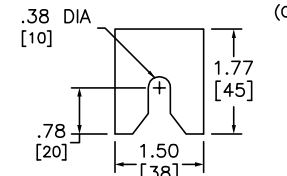


ADDITIONAL NOTES:  
 WHEN USED AS SERVICE EQUIPMENT, INSTALL BONDING STRAP AND REINSTALL GROUND LUG WHERE APPROPRIATE.  
 ● HANDLE EXTENSION AVAILABLE, ORDER KIT AHXLI, HANDLE IS HINGED, ALLOWING IT TO BE TUCKED UNDER THE DOOR ON THE COVER.  
 ▲ THIS LUG IS AVAILABLE FROM SQUARE D. ORDER CATALOG NUMBER CMLK4, KIT INCLUDES 4 LUGS  
 ‡ INDICATED VERSA-CRIMP CRIMPING TOOL.

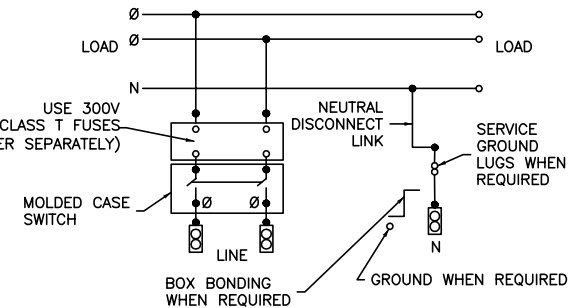
SYMBOL	KNOCKOUTS	
	CONDUIT SIZE IN	CONDUIT SIZE MM
A	.50	13
B	.75	19
E	1.50	38
F	2.00	51
G	2.50	64
H	3.00	76
I	3.50	89
J	4.00	102



TOP MOUNTING BRACKET



BOTTOM MOUNTING BRACKET



DUAL DIMENSIONS: INCHES MILLIMETERS

CATALOG NUMBER	ALTERNATE LUG QUANTITY PER LINE SIDE PHASE AND NEUTRAL TERMINALS (ORDER SEPARATELY)								
	ANDERSON				ILSCO			CMC	
	VHCL-600-12BN	VHCL-750-12BN	VACL-1000-12BN	LID2-600	2ACL-600	TA-600-2N	AU-600-2N (2 BARREL)	A1B2-600-2	2AB2-600 (2 BARREL)
	250-600 CU	500-750 CU	750-1000 AL	#2-600 AL/CU	250-600 AL/CU	#2-600 AL/CU	#(2) 2-600 AL/CU	#2-600 AL/CU	#(2)2-600 AL/CU
	VC-6‡	VC-7‡	VC-8‡	MECH	IDT-12	MECH	MECH	MECH	MECH
EZM1400FSU	1	1	1	1	1	1	1	1	1

SYSTEM TYPE	MAIN RATING (AMPERES)	CATALOG NUMBER *	MOLDED CASE SWITCH (FACTORY INSTALLED)	PROVISION TO MOUNT 300V CLASS T FUSES (ORDER SEPARATELY) FUSE RANGE AVAILABLE	LINE PHASE AND NEUTRAL LUG LANDING PADS PROVIDED FOR USE WITH CRIMP-TYPE LUGS(2-HOLE MOUNTING) QUANTITY OF LUGS PER PAD.	GROUND LUG WIRE RANGE (FACTORY INSTALLED)
1Ø 3W 120/240VAC	400	EZM1400FSU	LHF2600M (100kA) ●	225-400A	1(ORDER LUGS SEPARATELY)	(1) #6-300

NOTES:  
 FINISH - GRAY BAKED ENAMEL POWDER COAT PAINT OVER CLEANED GALVANNEALED STEEL.  
 UL LISTED - FILE E-10582, VOL. M, E-131840, VOL. M  
 SUITABLE FOR USE AS SERVICE EQUIPMENT.  
 MAIN HORIZONTAL CROSS BUS RATED AT 800 AMPERES.  
 MAIN DEVICES ARE SEALABLE BY UTILITY.  
 GANGABLE MULTI-METERING EQUIPMENT IS DESIGNED FOR WALL MOUNTING ONLY.  
 (NOT SUITABLE FOR FLOOR STANDING EQUIPMENT.)  
 \*MEETS EUSERC STANDARDS FOR WEST COAST BASED UTILITIES. DRAWING 315

EZ METER-PAK GANGABLE  
 MULTI-METERING EQUIPMENT  
 400A 1PH 3W MAIN FUSIBLE SWITCH DEVICES  
 UNDERGROUND FEED ONLY  
 RAINPROOF NEMA TYPE 3R ENCLOSURE



DWG# PWFDS-SYRS-0184  
 No.